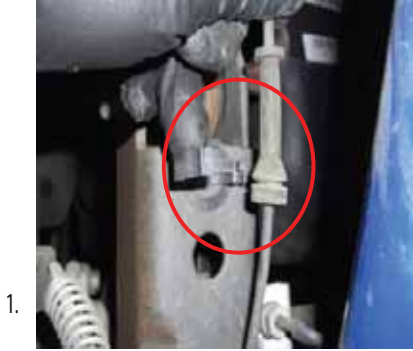


Position truck on a flat surface and lift vehicle by the frame so that the rear wheels are off the ground. Use a minimum 3 ton jack stands and place under frame for safety or a (2) two post lift if available. Make sure that the emergency brake is on and the front wheels are blocked to prevent a rollout.



1. Remove the rear wheels. Unhook the ABS line located at the upper trailing arm mount on both sides.



2. Unhook the ABS line at the frame on the both sides.



3. For vehicles with Autoride use a flat screw driver and pry the linkage off the upper trailing arm.



4. Using a 13mm socket, remove the brake line support bracket bolt.



5. Remove the hard brake line support bracket bolt located next to the lower track bar mount on the driver side.



6. Unbolt the passenger side hard brake line support bracket bolt.



7. Remove the 13mm emergency brake line support bracket on the passenger side frame rail.



8. Use a jack to support the axle, this will allow you to lower and raise the axle as you need during installation. Unbolt the lower sway bar end link on both sides with a 17mm wrench.



9. Remove the 21mm lower shock mount bolt on both sides.



10. Slowly lower the axle and remove the rear coils and isolator pads. Place the 1.5" spacer on top of the axle



11. Install the coil isolator pad on the coil spacer



12. Reinstall the coils. Reverse steps 1-9 for reassembly.